

**Quality ID #317: Preventive Care and Screening: Screening for High Blood Pressure and Follow-Up Documented – National Quality Strategy Domain: Community / Population Health**

**2018 OPTIONS FOR INDIVIDUAL MEASURES:**  
**CLAIMS ONLY**

**MEASURE TYPE:**  
Process

**DESCRIPTION:**  
Percentage of patients aged 18 years and older seen during the submitting period who were screened for high blood pressure AND a recommended follow-up plan is documented based on the current blood pressure (BP) reading as indicated

**INSTRUCTIONS:**  
This measure is to be submitted a minimum of **once per performance period** for patients seen during the performance period. Eligible clinicians who submit the measure must perform the blood pressure screening at the time of a qualifying visit by an eligible clinician and may not obtain measurements from external sources.

This measure may be submitted by eligible clinicians who perform the quality actions described in the measure based on the services provided and the measure-specific denominator coding. The intent of this measure is to screen patients for high blood pressure and provide recommended follow-up as indicated. Both the systolic and diastolic blood pressure measurements are required for inclusion. If there are multiple blood pressures on the same date of service, use the most recent (last reading documented) as the representative blood pressure. The documented follow-up plan must be related to the current BP reading as indicated, example: "Patient referred to primary care provider for BP management".

**Measure Submission:**

The listed denominator criteria is used to identify the intended patient population. The numerator quality-data codes included in this specification are used to submit the quality actions allowed by the measure. All measure-specific coding should be submitted on the claim(s) representing the eligible encounter.

**DENOMINATOR:**  
All patients aged 18 years and older

***DENOMINATOR NOTE:** \*Signifies that this CPT Category I code is a non-covered service under the PFS (Physician Fee Schedule). These non-covered services will not be counted in the denominator population for claims-based measures.*

**Denominator Criteria (Eligible Cases):**

Patients aged ≥ 18 years

**AND**

**Patient encounter during the performance period (CPT or HCPCS):** 90791, 90792, 92002, 92004, 92012, 92014, 99201, 99202, 99203, 99204, 99205, 99212, 99213, 99214, 99281, 99282, 99283, 99284, 99285, 99215, 99304, 99305, 99306, 99307, 99308, 99309, 99310, 99318, 99324, 99325, 99326, 99327, 99328, 99334, 99335, 99336, 99337, 99341, 99342, 99343, 99344, 99345, 99347, 99348, 99349, 99350, \*99385, \*99386, \*99387, \*99395, \*99396, \*99397 D7140, D7210, G0101, G0402, G0438, G0439

**WITHOUT**

Telehealth Modifier: GQ, GT, 95, POS 02

**NUMERATOR:**

Patients who were screened for high blood pressure AND have a recommended follow-up plan documented, as indicated, if the blood pressure is pre-hypertensive or hypertensive

**NUMERATOR NOTE:** Although the recommended screening interval for a normal BP reading is every 2 years, to meet the intent of this measure, BP screening and follow-up must be performed once per performance period. For patients with Normal blood pressure, a follow-up plan is not required. If the blood pressure is pre-hypertensive (SBP > 120 and <139 OR DBP >80 and <89) at a Primary Care Provider (PCP) encounter follow up as directed by the PCP would meet the intent of the measure (G8783).

**Definitions:**

**Blood Pressure (BP) Classification-** BP is defined by four (4) BP reading classifications: Normal, Pre-Hypertensive, First Hypertensive, and Second Hypertensive Readings.

**Recommended BP Follow-Up-** The Joint National Committee on the Prevention, Detection, Evaluation, and Treatment of High Blood Pressure (JNC 7) recommends BP screening intervals, lifestyle modifications and interventions based on the current BP reading as listed in the "Recommended Blood Pressure Follow- Up Interventions" listed below.

**Recommended Lifestyle Modifications-** The JNC 7 report outlines lifestyle modifications which must include one or more of the following as indicated:

- Weight Reduction
- Dietary Approaches to Stop Hypertension (DASH) Eating Plan
- Dietary Sodium Restriction
- Increased Physical Activity
- Moderation in alcohol (ETOH) Consumption

**Second Hypertensive Reading-** Requires a BP reading of Systolic BP  $\geq$  140 mmHg OR Diastolic BP  $\geq$  90 mmHg during the current encounter AND a most recent BP reading within the last 12 months Systolic BP  $\geq$  140 mmHg OR Diastolic BP  $\geq$  90 mmHg

**Second Hypertensive BP Reading Interventions-** The JNC 7 report outlines BP follow-up interventions for a second hypertensive BP reading and **must** include one or more of the following as indicated:

- Anti-Hypertensive Pharmacologic Therapy
- Laboratory Tests
- Electrocardiogram (ECG)

**Recommended Blood Pressure Follow-up Interventions-**

- **Normal BP:** No follow-up required for Systolic BP <120 mmHg AND Diastolic BP < 80 mmHg
- **Pre-Hypertensive BP:** Follow-up with rescreen every year with systolic BP of 120 – 139 mmHg OR diastolic BP of 80 – 89 mmHg AND recommended lifestyle modifications OR referral to Alternate/Primary Care Provider
- **First Hypertensive BP Reading:** Patients with one elevated reading of systolic BP  $\geq$  140 mmHg OR diastolic BP  $\geq$  90 mmHg:
  - Follow-up with rescreen > 1 day and < 4 weeks AND recommend lifestyle modifications OR referral to Alternative/Primary Care Provider
- **Second Hypertensive BP Reading:** Patients with second elevated reading of systolic BP  $\geq$  140 mmHg OR diastolic BP  $\geq$  90 mmHg:
  - Follow-up with Recommended lifestyle modifications AND one or more of the Second Hypertensive Reading Interventions OR referral to Alternative/Primary Care Provider

Recommended Blood Pressure Follow-Up Table

BP Classification	Systolic BP mmHg	Diastolic BP mmHg	Recommended Follow-Up (must include all indicated actions for each BP Classification)
Normal BP Reading	< 120	AND < 80	No Follow-Up required
Pre-Hypertensive BP Reading	≥ 120 AND ≤ 139	OR ≥ 80 AND ≤ 89	Rescreen BP within a minimum of 1 year <b>AND</b> Recommend Lifestyle Modifications  <b>OR</b> Referral to Alternative/Primary Care Provider
First Hypertensive BP Reading	≥ 140	OR ≥ 90	Rescreen BP within a minimum of > 1 day and < 4 weeks <b>AND</b> Recommend Lifestyle Modifications  <b>OR</b> Referral to Alternative/Primary Care Provider
Second Hypertensive BP Reading	≥ 140	OR ≥ 90	Recommend Lifestyle Modifications <b>AND</b> 1 or more of the Second Hypertensive Reading Interventions (see definitions)  <b>OR</b> Referral to Alternative/Primary Care Provider

**\*Not Eligible for High Blood Pressure Screening (Denominator Exclusion) -**

- Patient has an active diagnosis of hypertension starts prior to the current encounter

**\*\*Patients with a Documented Reason for not Screening or Follow-Up Plan for High Blood Pressure (Denominator Exception) –**

**NOTE:** This denominator exception should be evaluated during the most recent encounter in the measurement period with a documented blood pressure

- Patient refuses to participate (either BP measurement or follow-up)
- Patient is in an urgent or emergent situation where time is of the essence and to delay treatment would jeopardize the patient's health status. This may include but is not limited to severely elevated BP when immediate medical treatment is indicated

**Numerator Quality-Data Coding Options:**

**\*Screening for High Blood Pressure not Documented, Patient not Eligible**

**Denominator Exclusion: G9744:**

Patient not eligible due to active diagnosis of hypertension

**OR**

**Normal Blood Pressure Reading Documented, Follow-Up not Required**

*Performance Met: G8783:* Normal blood pressure reading documented, follow-up not required

**OR**

**Pre-Hypertensive or Hypertensive Blood Pressure Reading Documented, AND Indicated Follow-Up Documented**

*Performance Met: G8950:* Pre-Hypertensive or Hypertensive blood pressure reading documented, AND the indicated follow-up is documented

**OR**

**\*\*Screening or Follow-Up for High Blood Pressure not Completed, Documented Reason**

*Denominator Exception: G9745:* Documented reason for not screening or recommending a follow-up for high blood pressure

**OR**

**Blood Pressure Reading not Documented, Reason not Given**

*Performance Not Met: G8785:* Blood pressure reading not documented, reason not given

**OR**

**Pre-Hypertensive or Hypertensive Blood Pressure Reading Documented, Indicated Follow-Up not Documented, Reason not Given**

*Performance Not Met: G8952:* Pre-Hypertensive or Hypertensive blood pressure reading documented, indicated follow-up not documented, reason not given

**RATIONALE:**

Hypertension is a prevalent condition that affects approximately 66.9 million people in the United States. It is estimated that about 20-40% of the adult population has hypertension; the majority of people over age 65 have a hypertension diagnosis (Appleton SL, et. al., 2012 and Luehr D, et. al., 2012). Winter (2013) noted that 1 in 3 American adults have hypertension and the lifetime risk of developing hypertension is 90% (Winter KH, et. al., 2013). The African American population or non-Hispanic Blacks, the elderly, diabetics and those with chronic kidney disease are at increased risk of stroke, myocardial infarction and renal disease. Non-Hispanic Blacks have the highest prevalence at 38.6% (Winter KH, et. al., 2013). Hypertension is a major risk factor for ischemic heart disease, left ventricular hypertrophy, renal failure, stroke and dementia (Luehr D, et. al., 2012).

Hypertension is the most common reason for adult office visits other than pregnancy. Garrison (2013) stated that in 2007, 42 million ambulatory visits were attributed to hypertension (Garrison GM and Oberhelman S, 2013). It also has the highest utilization of prescription drugs. Numerous resources and treatment options are available, yet only about 40-50% of the hypertensive patients have their blood pressure under control (<140/90) (Appleton SL, et. al., 2012, Luehr D, et. al., 2012). In addition to medication non-compliance, poor outcomes are also attributed to poor adherence to lifestyle changes such as a low-sodium diet, weight loss, increased exercise and limiting alcohol intake. Many adults find it difficult to continue medications and lifestyle changes when they are asymptomatic. Symptoms of elevated blood pressure usually do not occur until secondary problems arise such as with vascular diseases (myocardial infarction, stroke, heart failure and renal insufficiency) (Luehr D, et. al., 2012).

Appropriate follow-up after blood pressure measurement is a pivotal component in preventing the progression of hypertension and the development of heart disease. Detection of marginally or fully elevated blood pressure by a specialty clinician warrants referral to a provider familiar with the management of hypertension and prehypertension. The 2010 ACCF/AHA Guideline for the Assessment of Cardiovascular Risk in Asymptomatic Adults continues to support using a global risk score such as the Framingham Risk Score, to assess risk of coronary heart disease (CHD) in all asymptomatic adults (Greenland P, et. al., 2010). Lifestyle modifications have demonstrated effectiveness in lowering blood pressure (JNC 7, 2003). The synergistic effect of several lifestyle modifications results in greater benefits than a single modification alone. Baseline diagnostic/laboratory testing establishes if a co-existing underlying condition is the etiology of hypertension and evaluates if end organ damage from hypertension has already occurred. Landmark trials such as ALLHAT have repeatedly proven the efficacy of pharmacologic therapy to control blood pressure and reduce the complications of hypertension. Follow-up intervals based on blood pressure control have been established by the JNC 7 and the USPSTF.

**CLINICAL RECOMMENDATION STATEMENTS:**

The U.S. Preventive Services Task Force (USPSTF) recommends screening for high blood pressure in adults age 18 years and older. This is a grade A recommendation.

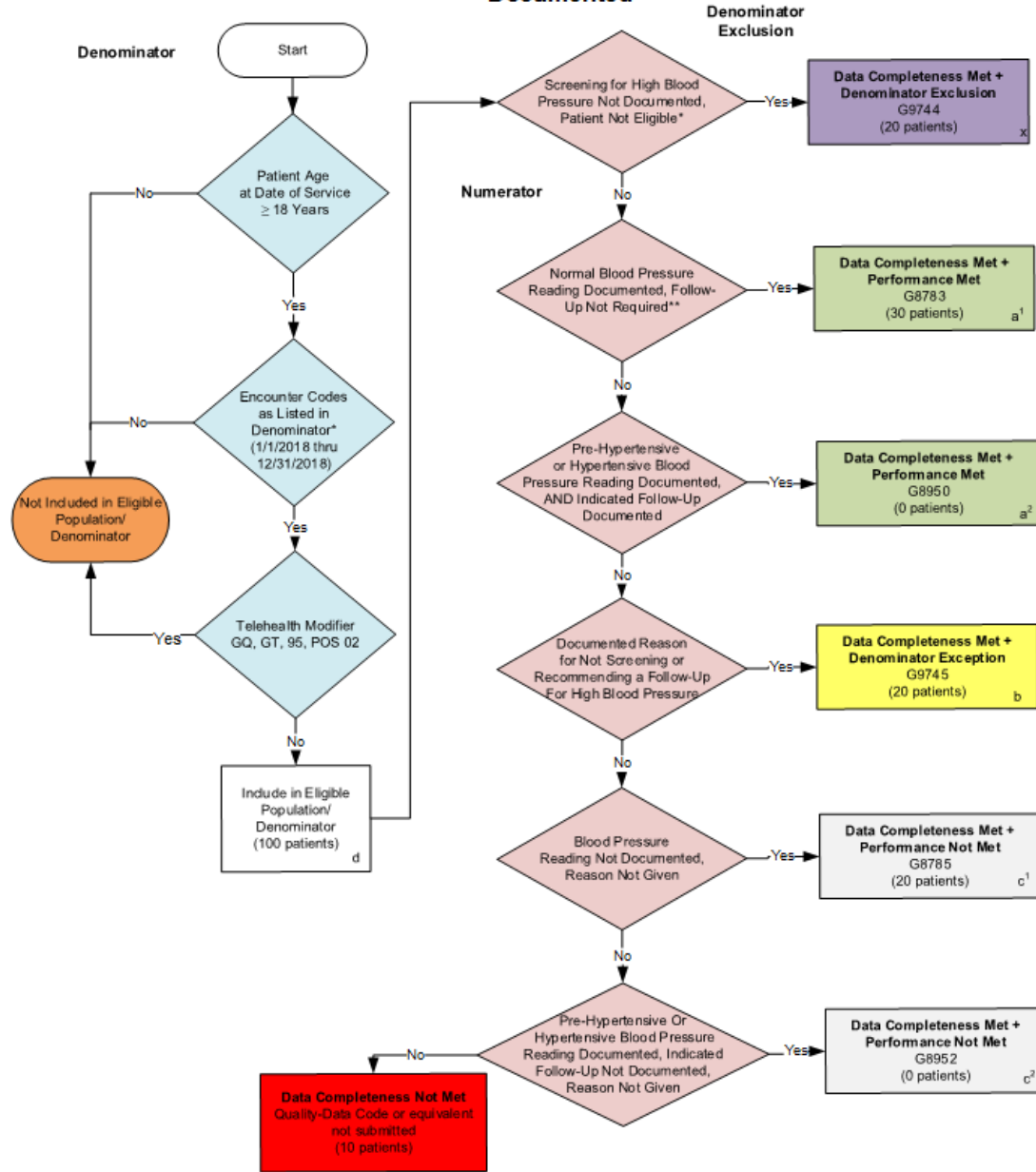
**COPYRIGHT:**

These measures were developed by Quality Insights, Inc. as a special project under the Quality Insights' Medicare Quality Improvement Organization (QIO) contract HHSM-500-2005-PA001C with the Centers for Medicare & Medicaid Services. These measures are in the public domain.

Limited proprietary coding is contained in the measure specifications for convenience. Users of the proprietary code sets should obtain all necessary licenses from the owners of these code sets. Quality Insights, Inc. disclaims all liability for use or accuracy of any Current Procedural Terminology (CPT [R]) or other coding contained in the specifications. CPT® contained in the Measures specifications is copyright 2004-2017 American Medical Association. All Rights Reserved. These performance measures are not clinical guidelines and do not establish a standard of medical care, and have not been tested for all potential applications.

**THE MEASURES AND SPECIFICATIONS ARE PROVIDED "AS IS" WITHOUT WARRANTY OF ANY KIND.**

## 2018 Claims Individual Measure Flow #317: Preventive Care and Screening: Screening for High Blood Pressure and Follow-Up Documented



### SAMPLE CALCULATIONS:

**Data Completeness Rate=**

$$\frac{\text{Denominator Exclusion (x=20 patients)} + \text{Performance Met (a¹+a²=30 patients)} + \text{Denominator Exception (b=20 patients)} + \text{Performance Not Met (c¹+c²=20 patients)}}{\text{Eligible Population / Denominator (d=100 patients)}} = \frac{90 \text{ patients}}{100 \text{ patients}} = 90.00\%$$

**Performance Rate=**

$$\frac{\text{Performance Met (a¹+a²=30 patients)}}{\text{Data Completeness Numerator (90 patients) - Denominator Exclusion (x=20 patients) - Denominator Exception (b=20)}} = \frac{30 \text{ patients}}{50 \text{ patients}} = 60.00\%$$

\* See the posted Measure Specification for specific coding and instructions to submit this measure.

\*\* See the posted Measure Specification for recommended specific blood pressure screening intervals, as well as definitions for exclusion criteria for this measure.

NOTE: Submission Frequency - Patient-process

CPT only copyright 2017 American Medical Association. All rights reserved.

The measure diagrams were developed by CMS as a supplemental resource to be used in conjunction with the measure specifications. They should not be used alone or as a substitution for the measure specification.

## 2018 Claims Flow For Quality ID

### #317: Preventive Care and Screening: Screening for High Blood Pressure and Follow-Up Documented

Please refer to the specific section of the Measure Specification to identify the denominator and numerator information for use in submitting this Individual Measure. This flow is for claims data submission.

1. Start with Denominator
2. Check Patient Age:
  - a. If the Age is greater than or equal to 18 years of age at Date of Service and equals No during the performance period, do not include in Eligible Patient Population. Stop Processing.
  - b. If the Age is greater than or equal to 18 years of age at Date of Service and equals Yes during the performance period, proceed to check Encounter Performed.
3. Check Encounter Performed:
  - a. If Encounter as Listed in the Denominator equals No, do not include in Eligible Patient Population. Stop Processing.
  - b. If Encounter as Listed in the Denominator equals Yes, proceed to check Telehealth Modifier.
4. Check Telehealth Modifier:
  - a. If Telehealth Modifier as Listed in the Denominator equals No, include in the Eligible Population.
  - b. If Telehealth Modifier as Listed in the Denominator equals Yes, do not include in Eligible Patient Population. Stop Processing.
5. Denominator Population:
  - a. Denominator Population is all Eligible Patients in the Denominator. Denominator is represented as Denominator in the Sample Calculation listed at the end of this document. Letter d equals 100 patients in the Sample Calculation.
6. Start Numerator
7. Check Screening for High Blood Pressure Not Documented, Patient Not Eligible:
  - a. If Screening for High Blood Pressure Not Documented, Patient Not Eligible equals Yes, include in Data Completeness Met and Denominator Exclusion.
  - b. Data Completeness Met and Denominator Exclusion is represented as Data Completeness and Performance Rate in the Sample Calculation listed at the end of this document. Letter x equals 20 patients in the Sample Calculation.
  - c. If Screening for High Blood Pressure Not Documented, Patient Not Eligible equals No, proceed to Normal Blood Pressure Reading Documented, Follow-Up Not Required.
8. Check Normal Blood Pressure Reading Documented, Follow-Up Not Required:
  - a. If Normal Blood Pressure Reading Documented, Follow-Up Not Required equals Yes, include in Data Completeness Met and Performance Met.

- b. Data Completeness Met and Performance Met letter is represented as Data Completeness and Performance Rate in the Sample Calculation listed at the end of this document. Letter a<sup>1</sup> equals 30 patients in the Sample Calculation.
  - c. If Normal Blood Pressure Reading Documented, Follow-Up Not Required equals No, proceed to Pre-Hypertensive or Hypertensive Blood Pressure Reading Documented, AND Indicated Follow-Up Documented.
9. Check Pre-Hypertensive or Hypertensive Blood Pressure Reading Documented, AND Indicated Follow-Up Documented:
- a. If Pre-Hypertensive or Hypertensive Blood Pressure Reading Documented, AND Indicated Follow-Up Documented equals Yes, include in Data Completeness Met and Performance Met.
  - b. Data Completeness Met and Performance Met letter is represented in the Data Completeness Rate and Performance Rate in the Sample Calculation listed at the end of this document. Letter a<sup>2</sup> equals 0 patients in the Sample Calculation.
  - c. If Pre-Hypertensive or Hypertensive Blood Pressure Reading Documented, AND Indicated Follow-Up Documented equals No, proceed to Documented Reason for Not Screening or Recommending a Follow-Up For High Blood Pressure.
10. Check Documented Reason for Not Screening or Recommending a Follow-Up For High Blood Pressure:
- a. If Documented Reason for Not Screening or Recommending a Follow-Up For High Blood Pressure equals Yes, include in Data Completeness Met and Denominator Exception.
  - b. Data Completeness Met and Denominator Exception is represented as Data Completeness and Performance Rate in the Sample Calculation listed at the end of this document. Letter b equals 20 patients in the Sample Calculation.
  - c. If Documented Reason for Not Screening or Recommending a Follow-Up For High Blood Pressure equals No, proceed to Blood Pressure Reading Not Documented, Reason Not Given.
11. Check Blood Pressure Reading Not Documented, Reason Not Given:
- a. If Blood Pressure Reading Not Documented, Reason Not Given equals Yes, include in Data Completeness Met and Performance Not Met.
  - b. Data Completeness Met and Performance Not Met is represented as Data Completeness and Performance Rate in the Sample Calculation listed at the end of this document. Letter c<sup>1</sup> equals 20 patients in the Sample Calculation.
  - c. If Blood Pressure Reading Not Documented, Reason Not Given equals No, proceed to Pre-Hypertensive or Hypertensive Blood Pressure Reading Documented, Indicated Follow-Up Not Documented, Reason Not Given.
12. Check Pre-Hypertensive or Hypertensive Blood Pressure Reading Documented, Indicated Follow-Up Not Documented, Reason Not Given:
- a. If Pre-Hypertensive or Hypertensive Blood Pressure Reading Documented, Indicated Follow-Up Not Documented, Reason Not Given equals Yes, include in Data Completeness Met and Performance Not Met.
  - b. Data Completeness Met and Performance Not Met is represented as Data Completeness in the Sample Calculation listed at the end of this document. Letter c<sup>2</sup> equals 0 patients in the Sample Calculation.



- c. If Pre-Hypertensive or Hypertensive Blood Pressure Reading Documented, Indicated Follow-Up Not Documented, Reason Not Given equals No, proceed to Data Completeness Not Met.

13. Check Data Completeness Not Met:

- a. If Data Completeness Not Met equals No, Quality Data Code not submitted. 10 patients have been subtracted from the Data Completeness Numerator in the Sample Calculation.

**SAMPLE CALCULATIONS:**

**Data Completeness Rate=**  

$$\frac{\text{Performance Met (a}^1\text{+a}^2\text{=30 patients) + Denominator Exclusion (x=20 patients) + Performance Not Met (c}^1\text{+c}^2\text{=20 patients)}}{\text{Eligible Population / Denominator (d=80 patients)}} = \frac{70 \text{ patients}}{80 \text{ patients}} = 87.50\%$$

**Performance Rate=**  

$$\frac{\text{Performance Met (a}^1\text{+a}^2\text{=30 patients)}}{\text{Data Completeness Numerator (70 patients) - Denominator Exclusion (x=20 patients)}} = \frac{30 \text{ patients}}{50 \text{ patients}} = 60.00\%$$