



Qdata[®] NMIBC (Non-muscle Invasive Bladder Cancer) is a real-world data set that offers a granular view of the NMIBC patient journey, stratified by T stage and grade.

Verana Health[®] powers urologic research using exclusive real-world data from the American Urological Association (AUA) Quality Registry (AQUA) and other sources, such as medical and pharmacy claims.

✔ **Exclusive Therapeutic Insights**
Only found here

✔ **Treatments & Outcomes Data**
Stratified by T Stage and Grade

✔ **Detailed Understanding of Disease Progression**
Track Recurrences Over Time

In AQUA Registry:

86K+

De-identified Patients with NMIBC*

3.7 Years

Median Length Follow Up

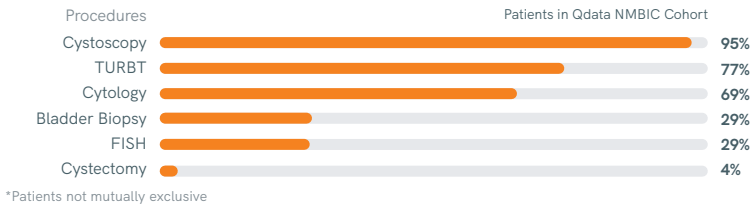
*Patients with Bladder Cancer ICD code \geq 2015, known sex, known birth year, age \geq 18 at first Bladder Cancer ICD code and T-stage \leq T1 at first T-stage and 1+ valid open or closed claim.

Key Variables: T Stage

Variable	Details	Estimated unique Qdata NMIBC patients by highest T stage at diagnosis
Ta	Non-invasive papillary carcinoma. The tumor is found only in polyps (papillary) on the surface of the inner lining (mucosa) of the bladder.	4
Tis	Carcinoma in situ: "flat tumor." Carcinoma in situ is a non-invasive but high-grade and typically flat lesion found on the surface of the inner lining of the bladder.	20,230
T1,T1a,T1b	The tumor invades subepithelial connective tissue, the lamina propria (tissue under the lining of the bladder), but has not spread to the bladder muscle. T1a refers to superficial lamina propria invasion. T1b refers to deeper lamina propria invasion (*approach to differentiating T1a and T1b is not universally accepted).	24,180

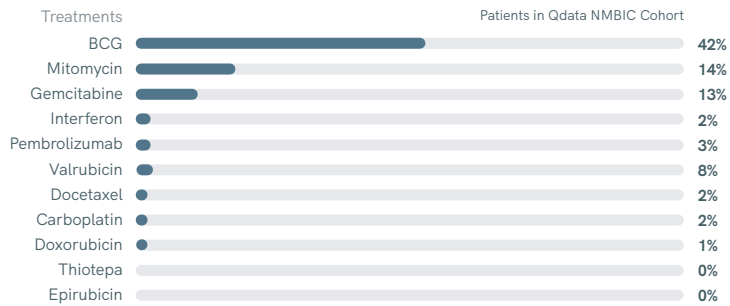
Procedures & Treatments

NMIBC Procedures



*Patients not mutually exclusive

NMIBC Treatments



*Treatments not mutually exclusive

Muscle-Invasive Bladder Cancer Statistics of Interest

De-identified Patients with Bladder Cancer* 38,000+

De-identified Patients with NMIBC** 86,000+

Total 'de novo' MIBC Patients that Present with T-stage > equal to T2 9,900*

Total NMIBC Patients that Progress to MIBC 5,200*

Average Follow Up from MIBC Diagnosis 1.9 years

Average Follow Up from MIBC Diagnosis 2.1 years

*Bladder Cancer patients defined as all patients with bladder cancer ICD diagnosis codes on 2015, known sex, known birth year, age >= 18 at first bladder cancer diagnosis.

**Qdata NMIBC patients defined as all patients with Bladder Cancer ICD code >= 2015, known sex, known birth year, age >= 18 at first Bladder Cancer ICD code diagnosis, age <= T1 at first T-stage and 1+ valid open or closed claim.

Qdata NMIBC
Potential Applications:

Clinical Development

HEOR & Medical Affairs

Commercialization

Ways to Engage Us

- Intuitive Dashboards
- Custom Insights via Services
- Direct Data Access

* Data current to September 2025. Data counts represented are subject to change. Data counts for research purposes are dependent on project scope and feasibility.



Want to learn more?
Talk to a team member today
team@veranahealth.com

veranahealth.com/uro-request

About Verana Health

Verana Health® is revolutionizing patient care and clinical research by unlocking the potential of real-world data. Verana Health has an exclusive real-world data network of 90 million de-identified patients from more than 20,000 clinicians, stemming from its exclusive data partnerships with leading medical societies. Verana Health harnesses deep expertise, secure advanced technology, and direct access to exclusive, near real-time data sources to deliver actionable quality insights that help companies make sense of the data.

For more information, visit www.veranahealth.com